



EZSTEEL

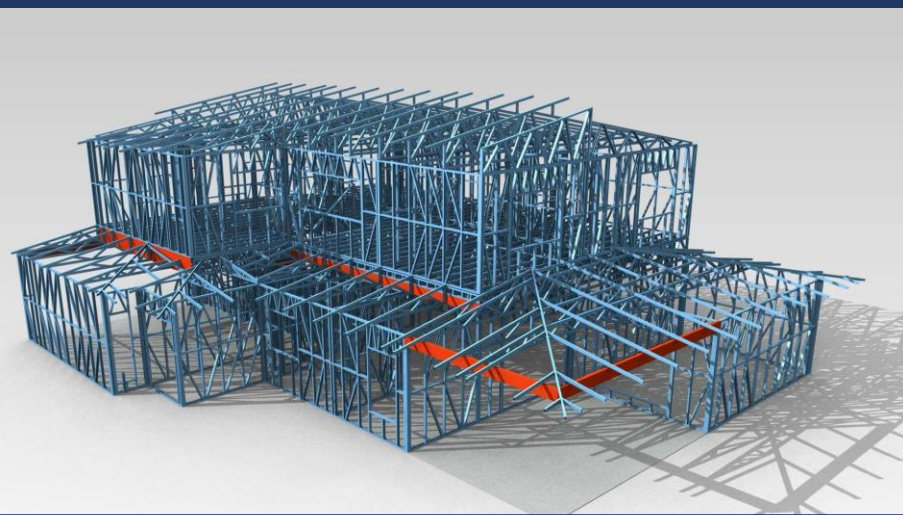
Light-Gauge Steel

Build Smarter

Build with EZSTEEL Framing

Prefabricated Steel Wall Frames

Floor Joists and Roof Trusses

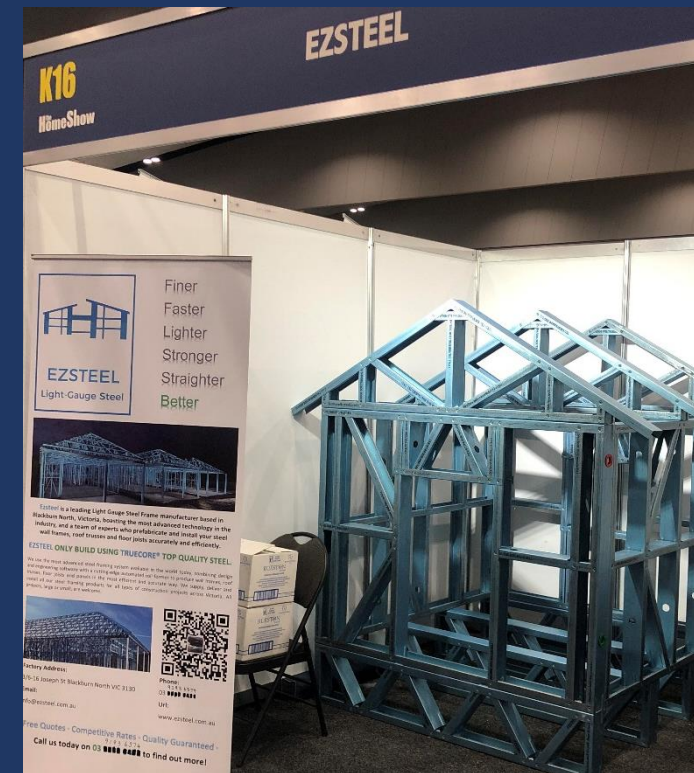


3D models provided for PCs & mobile devices



Prefabricated service holes

Featured in the Home Show Melbourne



Ezsteel is a leading light-gauge steel framing manufacturer based in Blackburn North, Victoria. Our framing is fabricated and delivered to site with layouts and rotatable 3D models for easy and fast onsite installation by builder or our installers.

Precisely engineered, prefabricated, lightweight and extremely high strength steel frames, trusses and joists, manufactured at Ezsteel in various gauges, are ideal for replacing all timber framing and saving costs on structural steel.

Ezsteel uses Australian made TRUECORE® steel for every project. Our team provides design, detailing and engineering sign-off for your complete peace of mind.

PROJECT APPLICATIONS



Apartments



Townhouses



Houses



Schools



Warehouses & Factories



Medical Centres

BENEFITS

- 100% termite and borer proof, and wind, earthquake and fire resistant
- Enhanced corrosion and rust resistance thanks to Activate® technology
- Lightweight yet strong and durable to reduce floor load
- Integrated professional trade services – easy for follow-on trades
- Easy installation and improved onsite efficiency - faster investment return
- Ezsteel framing won't twist or warp - no jamming doors or sticking windows
- Consistently straight and true meaning stronger lines and a beautiful finish
- Less associated costs – less structural steel required; less labour involved; no more timber waste recycling; no more framing levelling etc.
- Designed, engineered, fabricated and tested to comply with Australian Standards for the strongest cyclonic conditions
- Long lifespan with 50-year TRUECORE® warranty



CONNECT WITH US

Ezsteel.com.au

3/6-16 Joseph St Blackburn North VIC 3130

E: info@ezsteel.com.au

P: 03 9193 6574

· Free Quotes · Competitive Rates · Quality Guaranteed ·